

The background is a solid yellow color. In the four corners, there are abstract geometric patterns composed of various shapes and colors. The top-left corner features a grid of squares and rectangles in blue, red, black, and white, with some shapes having rounded corners. The top-right corner has a similar pattern with a prominent red circle and a blue semi-circle. The bottom-left corner shows a pattern with a blue circle, a black semi-circle, and a white semi-circle. The bottom-right corner has a blue circle and a white semi-circle. The central text is in a bold, black, serif font.

immigration & art

artists



Armando Silva

Border Relations/Mexican
American Identities



Tatyana Fazlalizadeh

Policy/Systemic
Oppression



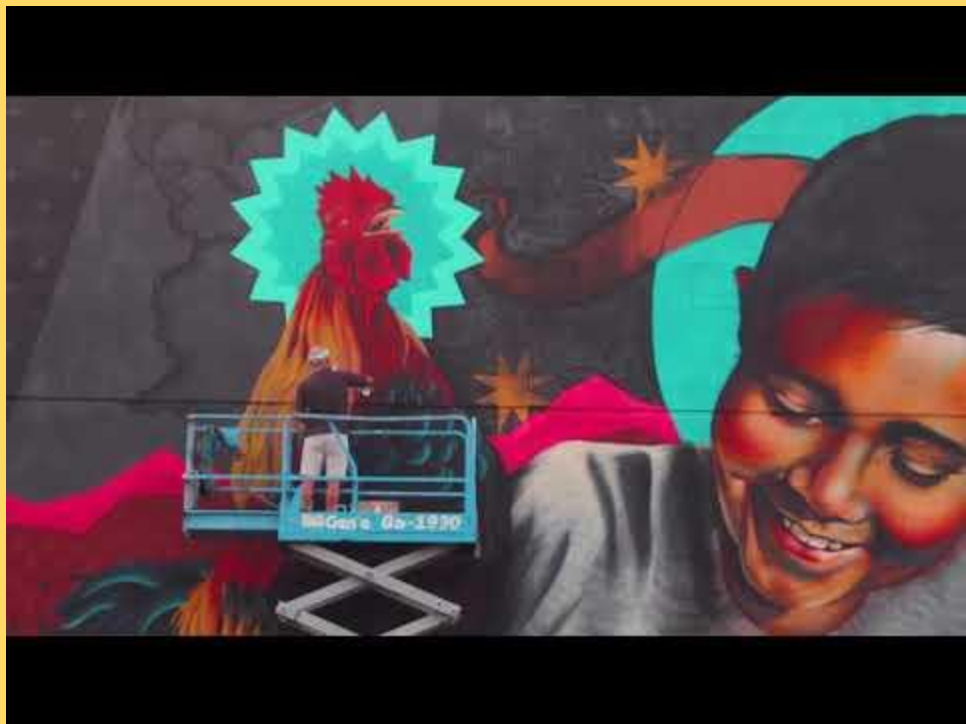
Edel Rodriguez

Stereotypes/Refugee
Status

Saber es Poder

Armando Silva





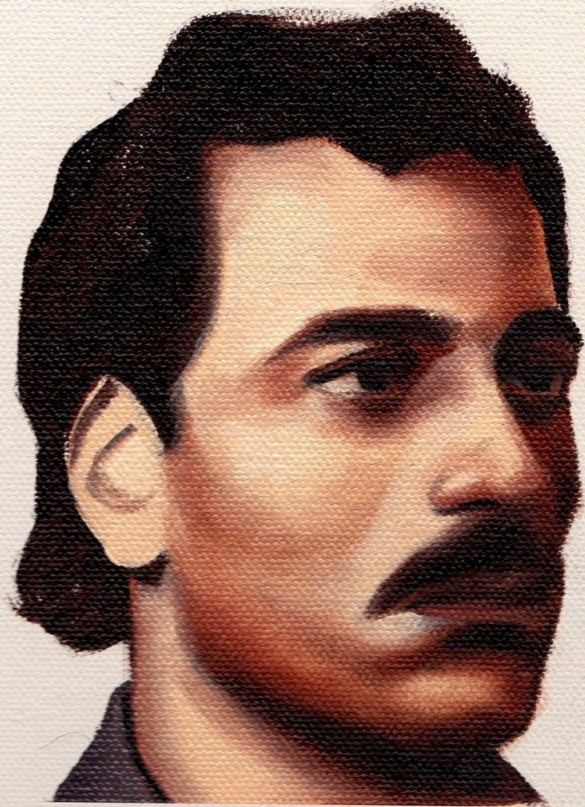


**“Armando Silva, Artist
and Performer (Greeley)
– Silva was selected in the
arts and community
action category for his
projects that empower
and inspire the
community, especially
youth, through dance,
performance, and public
art.”**

— COLORADO CREATIVE INDUSTRIES

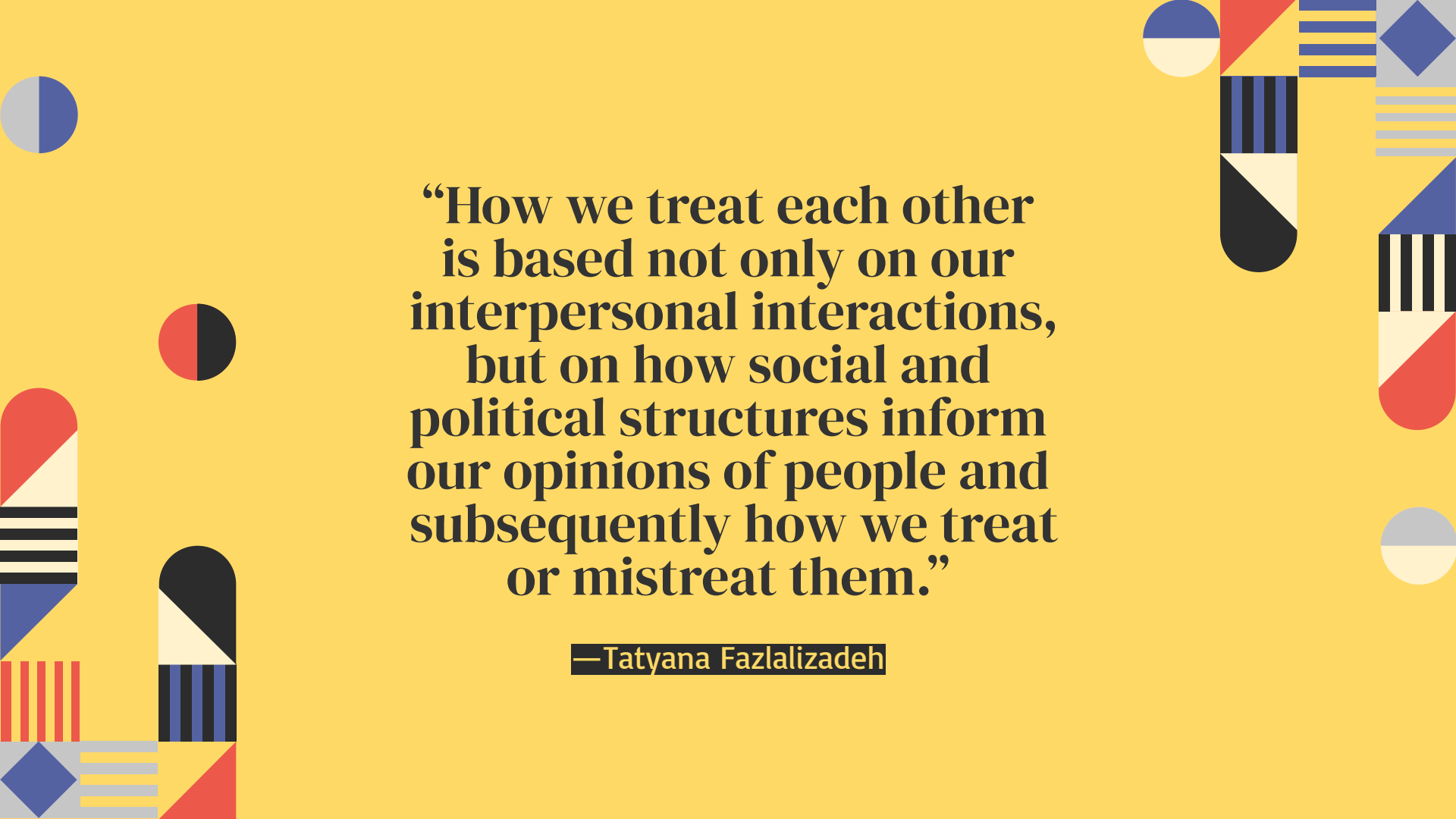
***Portrait of
my Father as
an Alien***

**Tatyana
Fazlalizadeh**





**TATYANA IS A BROOKLYN-BASED
STREET ARTIST AND PAINTER WHOSE
WORK RANGES FROM THE GALLERY...**

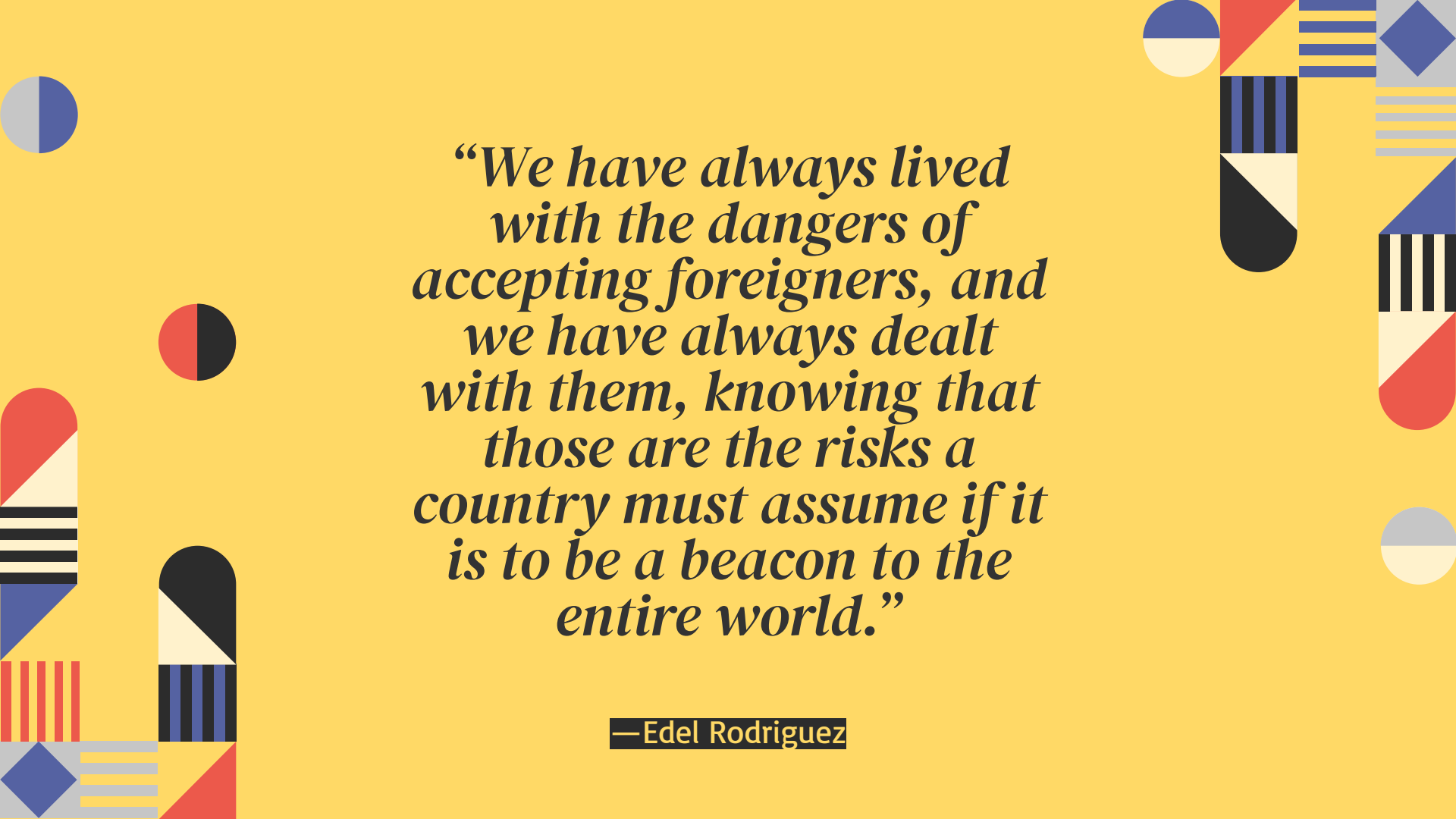


“How we treat each other is based not only on our interpersonal interactions, but on how social and political structures inform our opinions of people and subsequently how we treat or mistreat them.”

—Tatyana Fazlalizadeh



Strangers Edgel Rodriguez



*“We have always lived
with the dangers of
accepting foreigners, and
we have always dealt
with them, knowing that
those are the risks a
country must assume if it
is to be a beacon to the
entire world.”*

—Edel Rodriguez

Your Assignment

- Explore *Myths Surrounding Immigration Activity*
- Ideation/Planning as a Group
- Material: Pastels
- Artmaking
- Exhibition/Discussion
- Future Actions + Activity



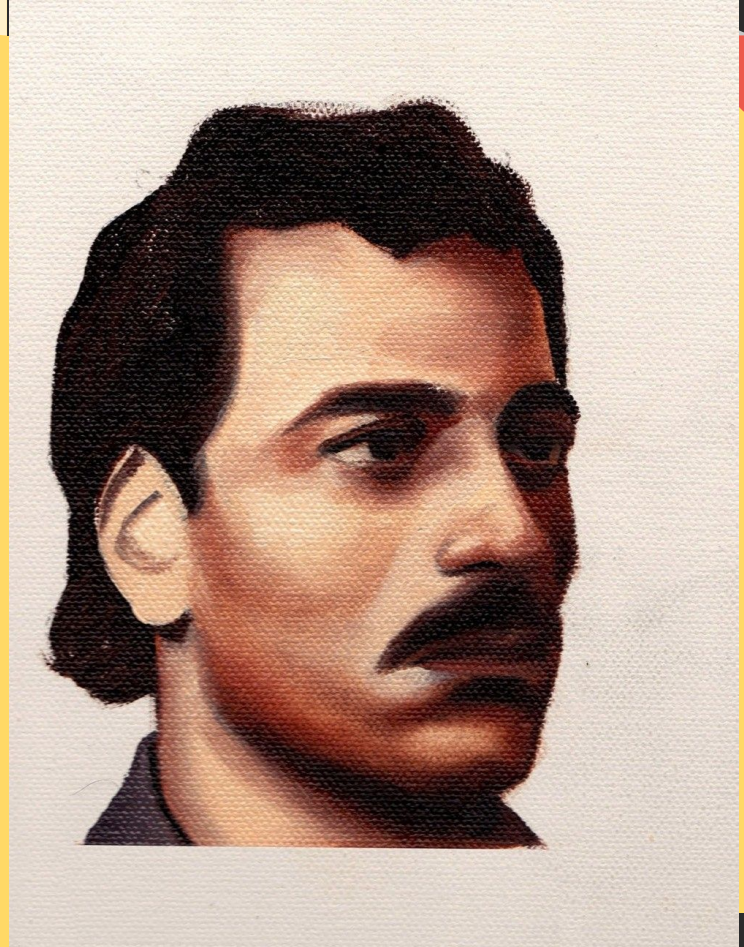


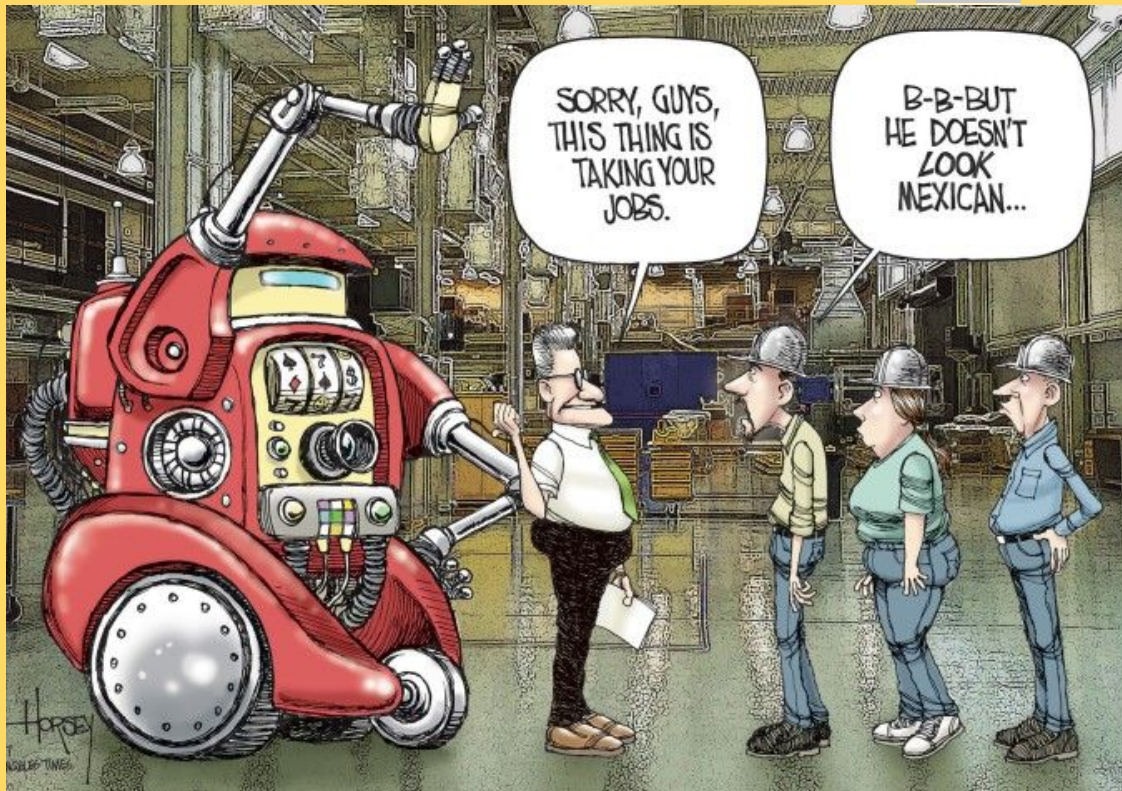
Activity: Ten Myths About Immigration

- A **myth** and an **artwork** will appear on the screen.
- Answer the following questions for each slide:
 - Where do you think this myth comes from?
 - Who benefits from this myth?
 - Why is this myth is untrue?
 - What techniques does the artist use to depict this concept?
 - Can you relate to this idea?

You will have 2 minutes for each slide. Then we will discuss our answers.

Most immigrants are here illegally.





Immigrants take good jobs from U.S. citizens.



“The worst” people from other countries are coming to the United States and bringing crime and violence.

Undocumented immigrants don't pay taxes and burden the national economy.



***Banning immigrants
and refugees from
majority-Muslim
countries will protect
our country from
terrorists.***

**WE THE
PEOPLE**



ARE GREATER THAN FEAR

Today's immigrants don't want to learn English.





Read + Discussion

<https://www.tolerance.org/magazine/spring-2011/ten-myths-about-immigration>

- What have you learned from this that you didn't know before?
- Why is it important to know about immigration?
- How can we advocate for this social justice issue?

The background is a solid yellow color. In the four corners, there are abstract geometric patterns composed of various shapes and colors. The top-left corner features a blue semi-circle, a red semi-circle, and a black triangle. The top-right corner has a red semi-circle, a blue semi-circle, a white circle, and a black triangle. The bottom-left corner shows a black semi-circle, a blue diamond, and a red triangle. The bottom-right corner contains a black semi-circle, a blue diamond, and a red triangle. The central text is in a bold, black, serif font.

Ideation + Planning

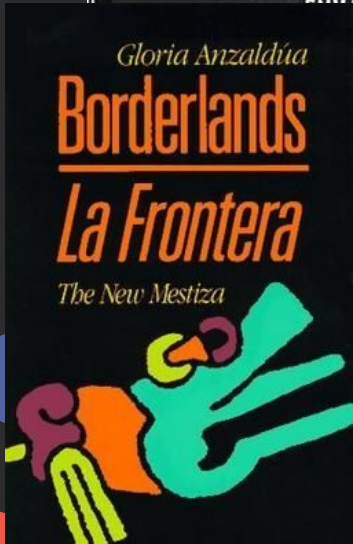
THE NEW COLOSSUS.

NOT LIKE THE BRAZEN GIANT OF GREEK FAME,
 WITH CONQUERING LIMBS ASTRIDE FROM LAND TO LAND;
 HERE AT OUR SEA-WASHED, SUNSET CAYES SHALL STAND
 A MIGHTY WOMAN WITH A TORCH, WHOSE FLAME
 IS THE IMPRISONED LIGHTNING, AND HER NAME
 MOTHER OF EXILES, FROM HER BEAON-HAND
 GLOWS WORLD-WIDE WELCOME; HER MILD EYES COMMAND
 THE AIR-BRIDGED HARBOR THAT TWIN CITIES FRAME.
 "KEEP ANCIENT LANDS, YOUR STORIED POMP!"
 CRIES SHE
 WITH SILENT LIPS. "GIVE ME YOUR TIRED, YOUR
 POOR,
 YOUR HUDDLED MASSES YEARNING TO BREATHE FREE,
 THE WRETCHED REFUSE OF YOUR TEEMING SHORE,
 SEND THESE, THE HOMELESS, TEMPEST-TOST TO ME,
 I LIFT MY LAMP BESIDE THE GOLDEN DOOR!"

THIS TABLET, WITH HER SONNET TO THE BARTHOLDI STATUE
 OF LIBERTY ENGRAVED UPON IT, IS PLACED UPON THESE WALLS
 IN LOVING MEMORY OF
ANNA LAZARUS
 NEW YORK CITY, JULY 22nd 1849
 DECEMBER 19th, 1887.



<https://www.nga.gov/education/teachers/lessons-activities/uncovering-america/immigration-displacement.html>



<https://www.poetryfoundation.org/poetrymagazine/poems/55472/in-colorado-my-father-scoured-and-stacked-dishes>



Your Project: Oil Pastel/Chalk Collage

Materials:

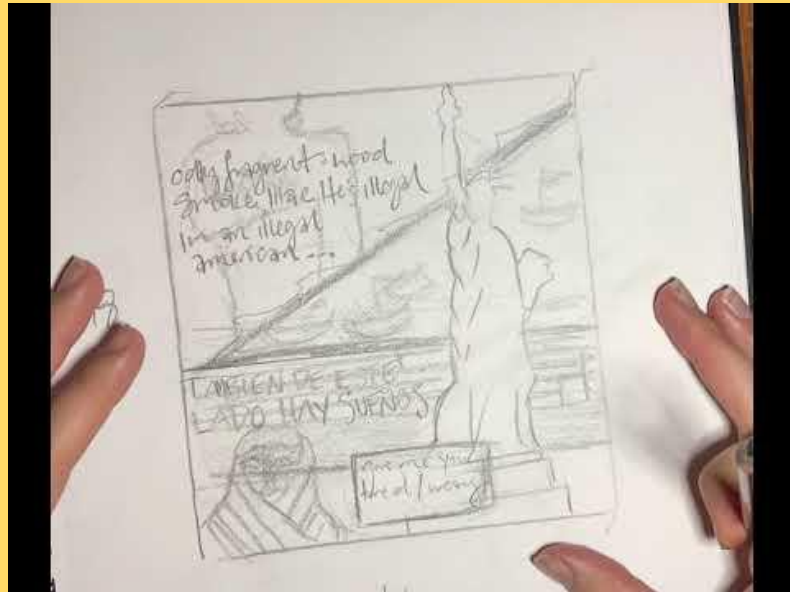
- Sketchbook
- Pencil
- Erasure
- 16x24 Newsprint
- Oil Pastels
- Chalks
- Blending Tools
 - Cotton Swabs
 - Kneaded Erasures
 - Sponges
 - Blending Stumps
 - Paper Towels
 - Palette Knife
- Fixative
- Optional:
 - Acrylic Paint
 - Paint brushes
 - Palette
 - Water

Steps:

1. Sketch a draft of your ideas/collage in your sketchbook.
2. Transfer draft onto newsprint
3. Apply pastels and tools to create imagery.
4. For extra details, apply acrylics.
5. Seal with Fixative.
6. Photograph + Edit.
7. Critique

See Tutorial Video

Sketches, Composition &
Transferring



**Oil Pastel
Techniques &
Blending Video**



The top corners of the slide feature decorative geometric patterns. The top-left corner has a complex arrangement of overlapping circles and squares in red, white, black, and blue. The top-right corner shows a red semi-circle. The bottom corners also have decorative elements: the bottom-left has a blue semi-circle, and the bottom-right has a vertical stack of shapes including a black semi-circle, white and black horizontal stripes, a red circle, and a blue semi-circle.

Process + Acrylics

Time Lapse Video of my entire
process..coming soon to viewers like you (:



Reflection & Assessment



Quiz:

<https://www.pbs.org/independentlens/blog/migration-quiz-2/>

Gallery Walks + Presentations

Students will display their art around the classroom and students will be assigned each other's works to write comments on with sticky notes. Then each artist will have the opportunity to explain their art.

